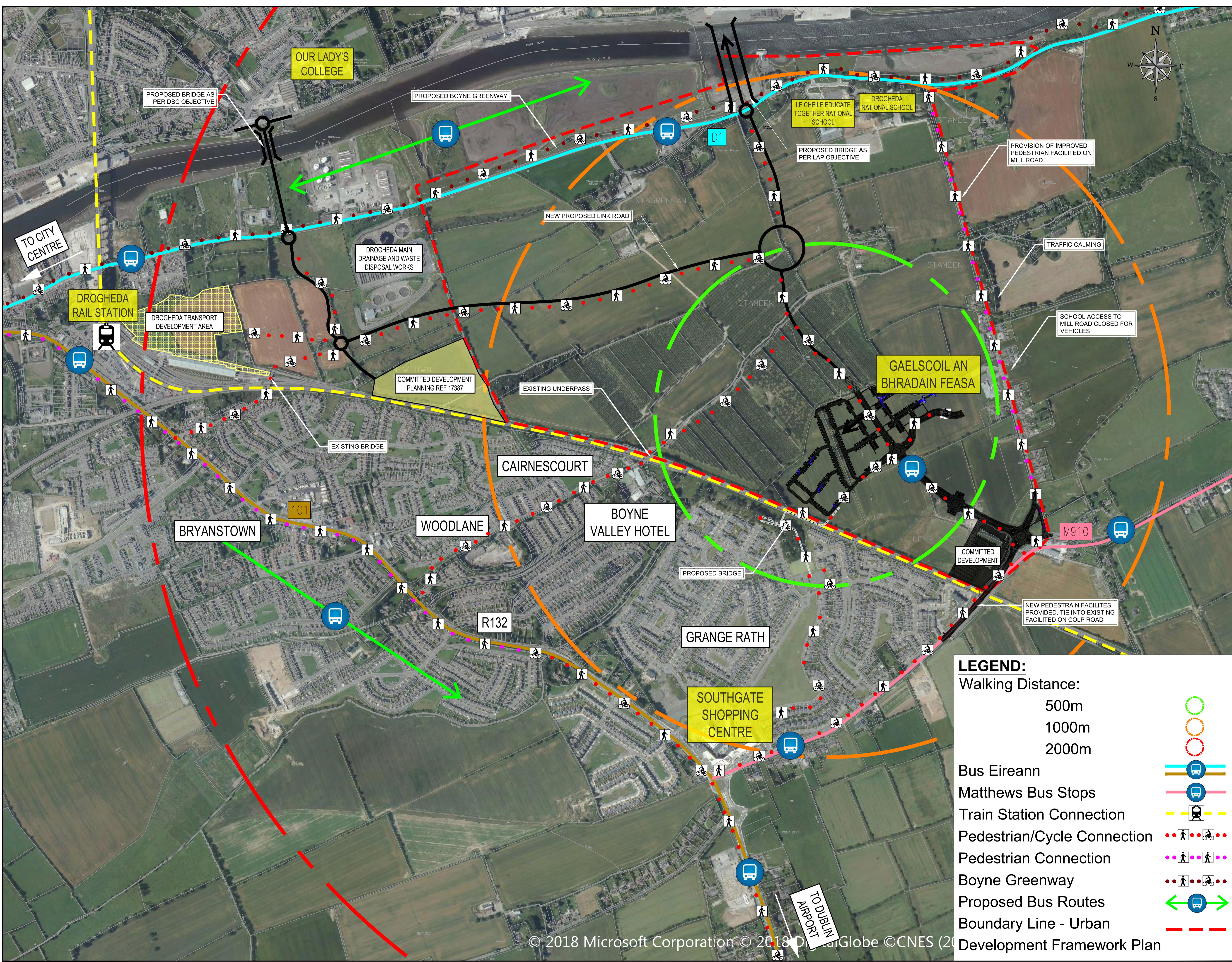


- GENERAL NOTES:**
1. ALL CO-ORDINATES ARE TO IRISH TRANSVERSE MERCATOR (BASED ON OS MAPPING)
 2. ALL LEVELS ARE TO ORDNANCE DATUM MALIN HEAD (BASED ON LIDAR SURVEY INFORMATION)
 3. ALL DIMENSIONS IN METRES UNLESS SPECIFIED OTHERWISE
 4. DO NOT SCALE FROM DRAWING



LEGEND:

Walking Distance:
 500m (green dotted line)
 1000m (orange dotted line)
 2000m (red dotted line)

Bus Eireann (blue line with bus icon)
 Matthews Bus Stops (blue circle with bus icon)
 Train Station Connection (yellow line with train icon)
 Pedestrian/Cycle Connection (dotted line with person and bicycle icons)
 Pedestrian Connection (dotted line with person icon)
 Boyne Greenway (dotted line with bicycle icon)
 Proposed Bus Routes (green double-headed arrow with bus icon)
 Boundary Line - Urban (red dashed line)
 Development Framework Plan (black outline)

REV.	DATE	DESCRIPTION	BY	CHKD.
PLANNING SHD STAGE 3				
DESIGNED	DMW	PREPARED	JP	
DATE	OCT 2019	CHECKED	DJR	

DBFL
 Dublin Office: Ormrod House, Upper Ormrod Quay, Dublin 7, Ireland. PHONE: +353 1 400 4000 FAX: +353 1 400 4050
 Waterford Office: Unit 2, The Chandlers, 1-2 O'Connell Street, Waterford, Ireland. PHONE: +353 51 309 500 FAX: +353 51 844 913

DBFL Consulting Engineers email: info@dbfl.ie site: www.dbfl.ie

PROJECT
STRATEGIC HOUSING DEVELOPMENT AT COLPE WEST, DROGHEDA, CO. MEATH

DRG. TITLE
LONG TERM TRANSPORTATION LINKAGE PLAN

CLIENT
SHANNON HOMES DROGHEDA LTD.

SCALE 1:5000 @A1 FILE REF. 170092-1052
 DRG. NO. 170092-1052